



GMT MONTHLY MEMBERSHIP PROGRESS REPORT

Results as of: 12/31/2019

Multiple District 33

LOCATION: MASSACHUSETTS

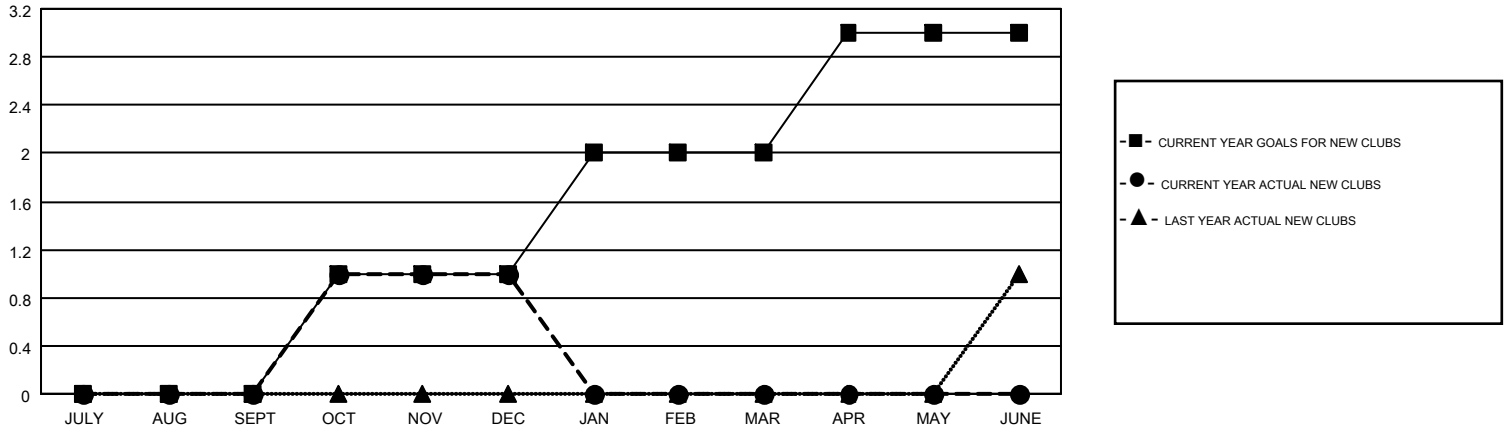
GMT: OPEN

GMT CA 1

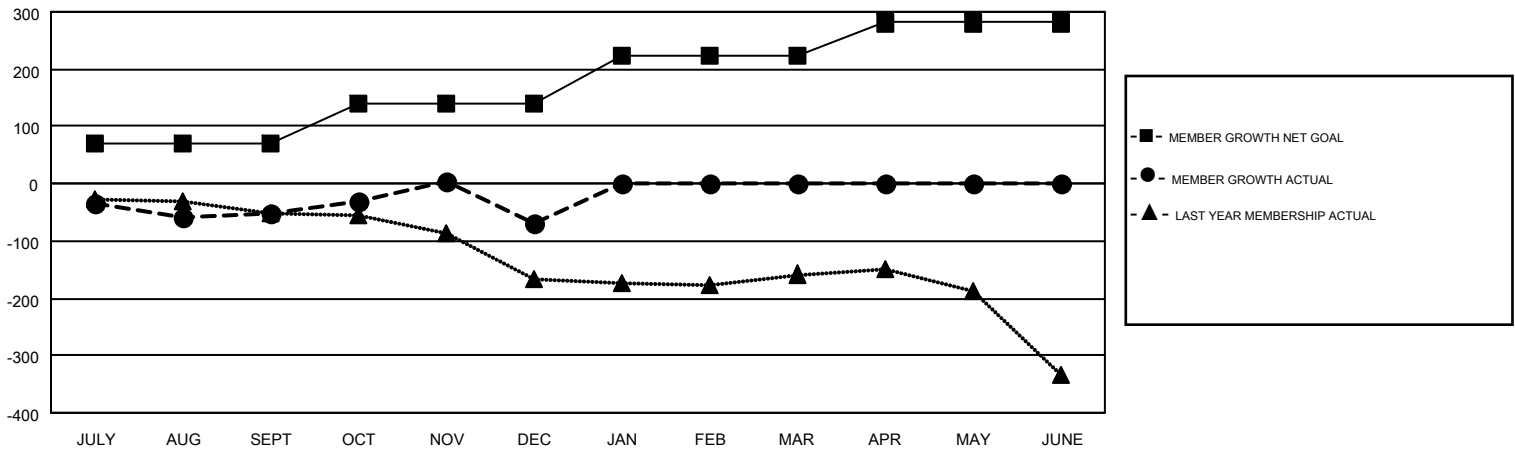
Clubs			
RESULTS FOR 2019-2020			
QUARTER	NEW CLUB GOAL	NEW CLUBS	DROPPED CLUBS
JULY/AUG/SEPT	0	0	2
OCT/NOV/DEC	1	1	1
JAN/FEB/MAR	1	0	0
APR/MAY/JUNE	1	0	0

Members			
RESULTS FOR 2019-2020			
QUARTER	MEMBER GROWTH NET GOAL	MEMBER GROWTH ACTUAL	DROPPED MEMBERS ACTUAL (including transfers)
JULY/AUG/SEPT	70	100	134
OCT/NOV/DEC	71	180	191
JAN/FEB/MAR	81	0	0
APR/MAY/JUNE	59	0	0

GOALS AND ACTUAL NEW CLUBS CUMULATIVE



GOALS AND ACTUAL MEMBERS CUMULATIVE



DROPPED CLUBS: 3	92 CLUBS OF 221 ADDED 1 OR MORE NEW MEMBERS	<u>GENDER DISTRIBUTION</u>
		MALE 4,511 (64.81%)
		FEMALE 2,449 (35.19%)
<u>DROPPED MEMBERS</u>	CLICK HERE FOR CUMULATIVE MEMBERSHIP DATA	TOTAL FAMILY UNIT MEMBERS 1,132
DECEASED 47		FAMILY MEMBERS PAYING HALF DUES 576
CLUB CANCELLED 12		
OTHER 266		
TOTAL 325		